

# Love Across the Miles

A modern guide to managing out-of-state funeral arrangements and estate closures.



A tactical manual for bridging the gap between where you are and where you need to be.



# Managing a Monumental Task from a Distance

## The Sandwich Generation

Balancing a career and children in one location while managing a parent's estate in another.



## Digital Natives

Preferring e-signatures, video calls, and online portals over fax machines and in-person appointments.



## Logistically Challenged

Facing the immediate pressure of securing properties and arranging transport without being physically present.

**Logistical Grief: The heavy intersection of emotional loss, financial drain, and long-distance coordination.**



# Clarifying Your Legal Authority Before Making the First Call

During Life

Immediately After Death

Long-Term Closure



Medical Agent	Funeral Agent / Next of Kin	Financial POA / Executor
<p><b>Role:</b> Healthcare Proxy.</p> <p><b>Timeline:</b> Active during life to make medical decisions.</p> <p><b>Status Now:</b> Authority ends at the exact time of death.</p>	<p><b>Role:</b> Controls Final Disposition.</p> <p><b>Timeline:</b> Active immediately after death.</p> <p><b>Status Now:</b> Holds the legal right to plan services and authorize cremation or burial.</p>	<p><b>Role:</b> Estate Manager.</p> <p><b>Timeline:</b> Power of Attorney (Life) transitions to Executor (After Death).</p> <p><b>Status Now:</b> Manages the estate, pays bills, and closes accounts.</p>

**Key Takeaway:** You may hold all three roles, or they may be split among family members. Confirm your legal standing before signing vendor contracts.

# Waypoint 1: Stabilize and Secure the Perimeter

Resist the urge to book a flight immediately. The most critical 24-hour tasks can be executed from your laptop.



## The Physical Home

**Dispatch "Boots on the Ground":** Identify a neighbor or manager for a visual exterior walk-around.

**Audit Spare Keys:** If the key-holder circle is unknown, hire a locksmith to rekey deadbolts remotely (paid via phone).

**Climate Control:** Set winter thermostats to 55°F (prevent burst pipes) or maintain summer AC (prevent mold).

**Visual Deterrence:** Put lights on timers and have packages hidden.



## The Digital Lockdown

**Secure the Mail:** Initiate a temporary USPS mail hold online so overflowing boxes don't signal an empty home.

**Legacy Contacts:** Check Apple/Google for "Legacy Contact" status to access digital instructions.

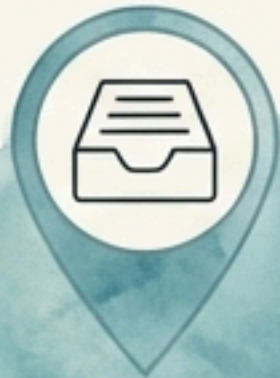
**Audit Subscriptions:** Check email for auto-pay notices to monitor dwindling bank balances.



# Locating Pre-Arrangements from Afar

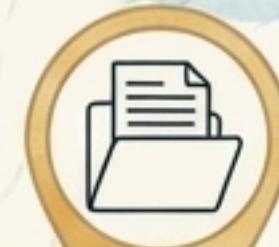
## Waypoint 1 (The Inbox):

Search email for keywords: Pre-need, Policy, Cemetery, Funeral, or Will.



## Waypoint 2 (The Cloud):

Check apps like Dropbox, Evernote, or 1Password for virtual safe deposit boxes.



## Waypoint 3 (The "Yellow Folder" Rule):

Direct your local contact to check common physical hiding spots: the top freezer shelf, a fireproof box under the bed, or the home office desk.



**Remote Pro-Tip:** Create a Shared Note, Slack, or Discord channel with your local contact. Have them upload time-stamped photos of documents and keys to a central, secure feed.

# Overcoming the Paperwork Bottleneck



## The “Wet Signature” Trap

Ask immediately which state permits require a physical notary or overnight mailing versus legally accepted e-signatures.

## Demand Visual Proofs

Request smartphone photos of actual floral arrivals (not catalog shots) and digital PDF proofs of all printed stationery before giving the final OK.

## The Insurance Bridge

Ask if the firm handles “Insurance Assignments” to bypass heavy out-of-pocket remote expenses.



**Remote Pro-Tip:** Request the General Price List (GPL) as a searchable PDF. Use Cmd+F/Ctrl+F to instantly locate fees for Transportation or Livestreaming without wading through industry jargon.

# Waypoint 3: The Transport Logistics Matrix

## Path A: Cremate Locally, Memorialize Globally (Recommended)



**Complexity:** Low. Transport cremains easily via carry-on or USPS.

**Cost:** Highly affordable.

**Timeline:** Flexible. Hit 'pause' and plan a memorial service later on your own schedule.



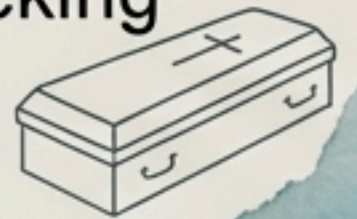
## Path B: Casketed Air Transport (Traditional)



**Complexity:** High. Requires the TSA 'Known Shipper' protocol and coordinating two distinct funeral homes (Shipping & Receiving).

**Cost:** High. Involves thousands in airline and forwarding fees.


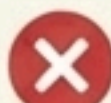
**Timeline:** Rushed. Driven by the ticking clock of physical disposition.



# Traveling with Ashes: The TSA Protocol

## Rule 1: Carry-On Only

Never check an urn.  
Checked bags are subject to rough handling; keep them safe under your direct care.

**Rule 2: X-Ray Friendly Containers.** TSA agents must see through the container. Use wood, plastic, or cardboard.   
Never use lead-lined or heavy metal urns for travel. 



**Rule 3: Carry Documentation.** Always carry a certified Death Certificate and the Cremation Permit to prevent security delays.

**The Mailing Alternative:** If shipping, you must use USPS Priority Mail Express. Request "Label 139" to ensure postal workers handle the package with the highest care.

# Waypoint 4: Designing the Hybrid Memorial

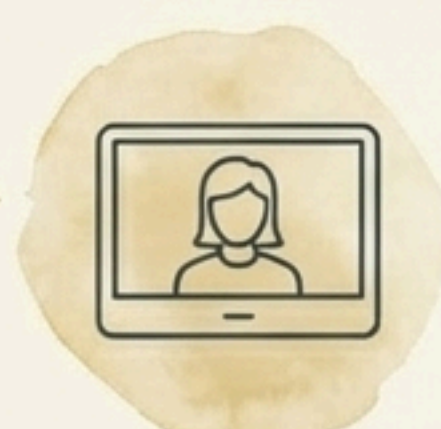
## Audio is King:

Poor video is forgivable; poor audio is not. Demand dedicated microphones for the podium.



## Remote Eulogies:

Avoid live Wi-Fi risks. Have remote speakers pre-record high-quality video messages to project on a large screen in the chapel.



## The Service

## Digital Tribute Walls:

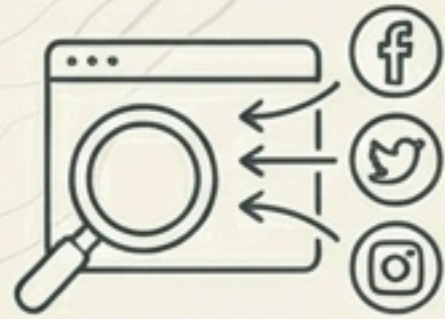
Place QR codes on printed programs so local guests can join remote attendees in uploading crowdsourced photos and memories.



**The Archive:** Request a high-resolution, 'raw' MP4 video file of the service. Store it in a cloud drive as a permanent memorial, independent of a physical location.



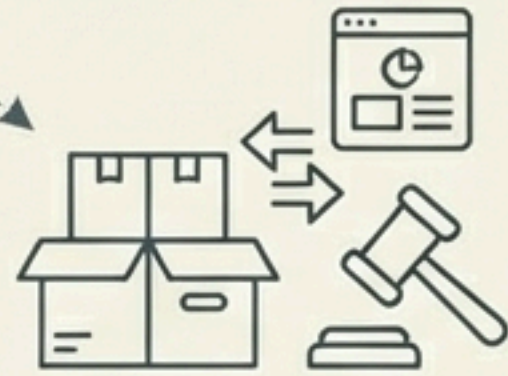
# Waypoint 5: The 30-Day Admin Burn-Down



## Step 1:

### The Digital Pivot

Scrub bank statements for invisible subscriptions (cloud storage, streaming). Memorialize or delete social media accounts.



## Step 2:

### Remote Estate Clearing.

Hire Senior Move Managers to sort (keep/sell/donate) and Online Estate Liquidators to run digital auctions.



## Step 3:

### The Final Sweep.

Hire local junk hauling for a broom-clean sweep. Pay the final invoice via an online portal only after receiving photo proof.



## Step 4: Remote Closing.

Utilize mobile notaries and live video walkthroughs to finalize property sales or lease handovers without a cross-country flight.

# Notifying the “Big Three” & Final Paperwork

**Death Certificates:** Order 10-12 certified copies via the funeral home or the VitalChek portal. (Photocopies are rarely accepted by financial institutions).



**1. Social Security:** Usually notified directly by the funeral home, but the executor must verify.



**2. The IRS:** File Form 56 to establish your official fiduciary relationship.



**3. Credit Bureaus:** Send certificates to Equifax, Experian, and TransUnion to lock the profile against post-mortem identity theft.



**The Master Estate Folder:** Keep a timestamped cloud folder of every receipt and document. A transparent digital trail is your greatest defense against disputes.

# Taking Care of the Executor



## **Audit Your Emotional Labor:**

Long-distance execution is "invisible" work. Acknowledge the immense mental load you've carried across state lines.



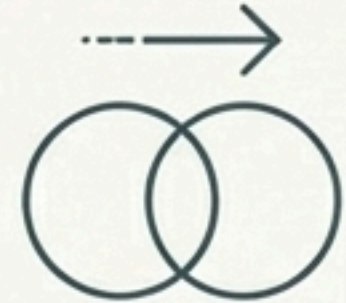
## **The "Done" List:**

Replace your lingering To-Do list with a "Done" list. Look back at the logistical mountains you've successfully climbed.



## **Create Your Own Space:**

Since you cannot visit a local gravesite regularly, create a dedicated physical memorial in your own home (a framed photo or a special candle).



## **The Transition:**

Give yourself permission to transition from "Executor" back to "Griever."

# Presence Without Proximity

True North



You have successfully bridged the gap between miles and memories. You have ensured a life was honored, a home was secured, and a legacy was preserved.

Your physical absence from the location did not diminish the presence of your love and commitment.

We specialize in tech-forward funeral solutions and seamless remote arrangements. We are your 'boots on the ground' partner.

# Love Across the Miles

A modern guide to managing out-of-state funeral arrangements and estate closures.



A tactical manual for bridging the gap between where you are and where you need to be.



Tri-City Cremations

276-225-4100