

Cremation is Only the Beginning

Hoffmann Schneider
& *Kitchen*

FUNERAL HOME • CREMATORY • PREPLANNING

Because We Care

Free Guide
DOWNLOADABLE

Uncovering the Gift of Time

For decades, cremation has been wrongly associated with a quick exit or skipping the service, leaving a sudden emotional void. The reality is quite the opposite. Cremation is not a final destination.

A Flexible Canvas for Remembrance



Traditional burial often comes with rigid, immediate timelines. By choosing cremation, you are no longer bound by a casketed service schedule. You now have the time and space to plan a farewell that truly mirrors the spirit of the person you lost.

The Classic Commemoration

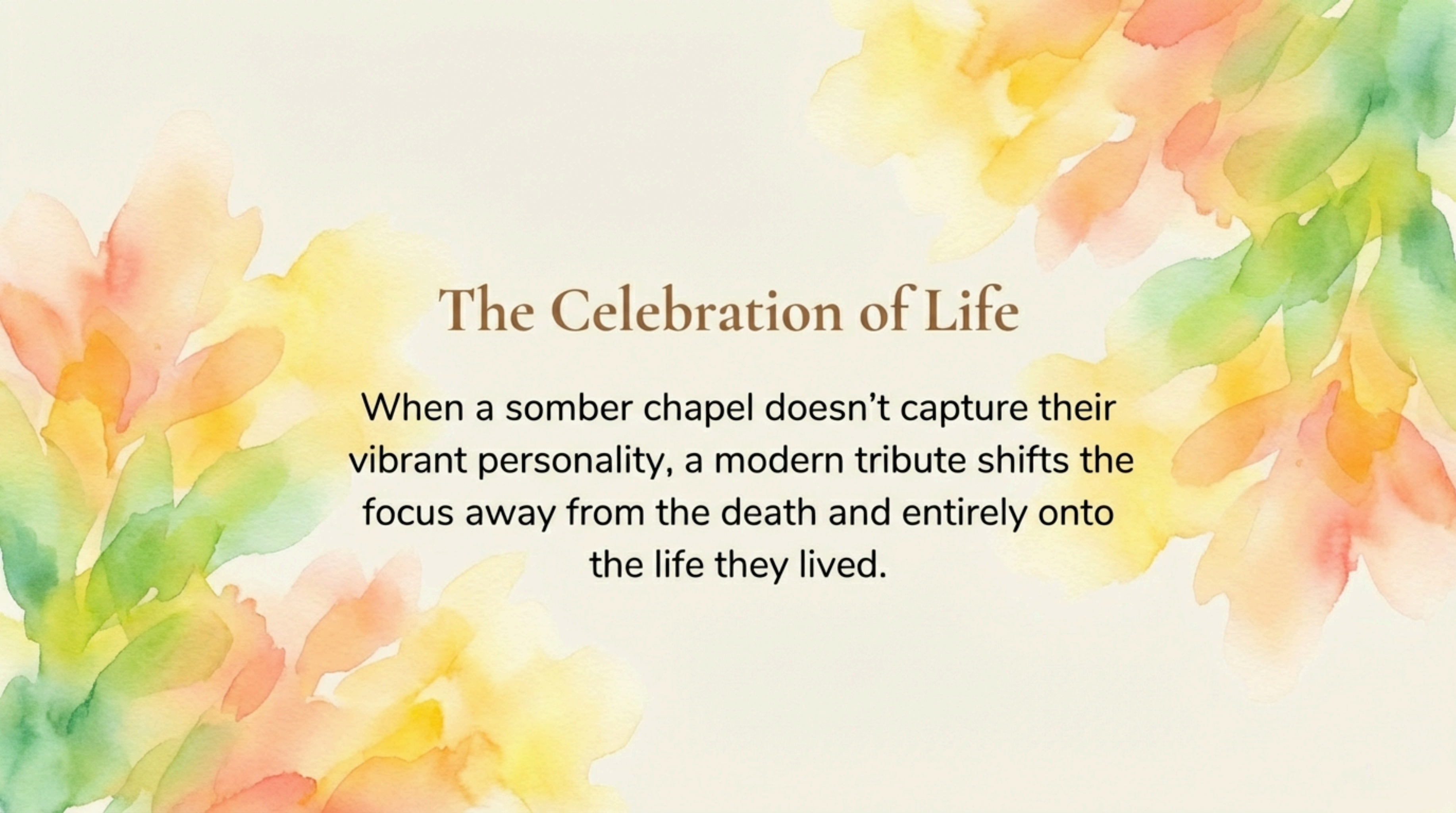
Choosing cremation doesn't mean abandoning tradition. Many families find deep comfort in the familiar structure of a formal chapel or religious service.



Preserving Familiar Comforts

- The Memorial Service: The urn serves as the focal point in a house of worship or funeral home, rather than a body.
- The Visitation: Gather around the urn alongside photographs and mementos, or choose a rental casket for a traditional viewing beforehand.
- Committal Services: A brief graveside service provides closure when interring remains in a columbarium or family plot.



The background of the image is a soft, artistic watercolor illustration of flowers. The colors are warm and vibrant, featuring shades of yellow, orange, and red for the petals, and various greens for the leaves. The style is painterly and delicate, with soft edges and a gentle gradient of colors. The flowers are arranged in a way that they appear to be blooming from the corners towards the center, framing the text.

The Celebration of Life

When a somber chapel doesn't capture their vibrant personality, a modern tribute shifts the focus away from the death and entirely onto the life they lived.

Designing a Modern Tribute



Themed Gatherings: Host in a botanical garden with seed packet favors, or rent a local theater for a screening of their favorite movie.



Open Mic Storytelling: Replace formal eulogies with unscripted, funny, and poignant shared memories.



Interactive Memorials: Create stations featuring their favorite snacks, craftwork, or a digital photo slideshow guests can add to from their phones.

“Shift the focus to the life lived.”

Nature-Based Farewells

For those who felt most alive in the great outdoors, traditional buildings can feel restrictive. Stepping into nature offers a powerful sense of returning to the elements.



Returning to the Elements



The Surfer's Paddle-Out:
Friends paddle into the ocean, form a circle, share words, and scatter ashes or flowers into the surf.



Forest Scatterings:
Hiking to a favorite viewpoint in a green cemetery or on private land to release ashes.



Destination Memorials:
Traveling with a portable urn to a dreamed-of geographical location for a private sunset ceremony.



Honoring the Earth

Cremation is a step toward a smaller environmental footprint. Modern green memorials move entirely away from permanent stone and metal, focusing instead on fostering new life and healing the planet.

Living Memorials

Raw ashes have a high pH and salt content that can be harsh on plants. Specialized systems ensure a memorial tree thrives.

Families can plant these in private spaces or choose protected Memorial Forests to become part of a permanent ecosystem.

Neutralizing soil starter & young sapling

Ashes

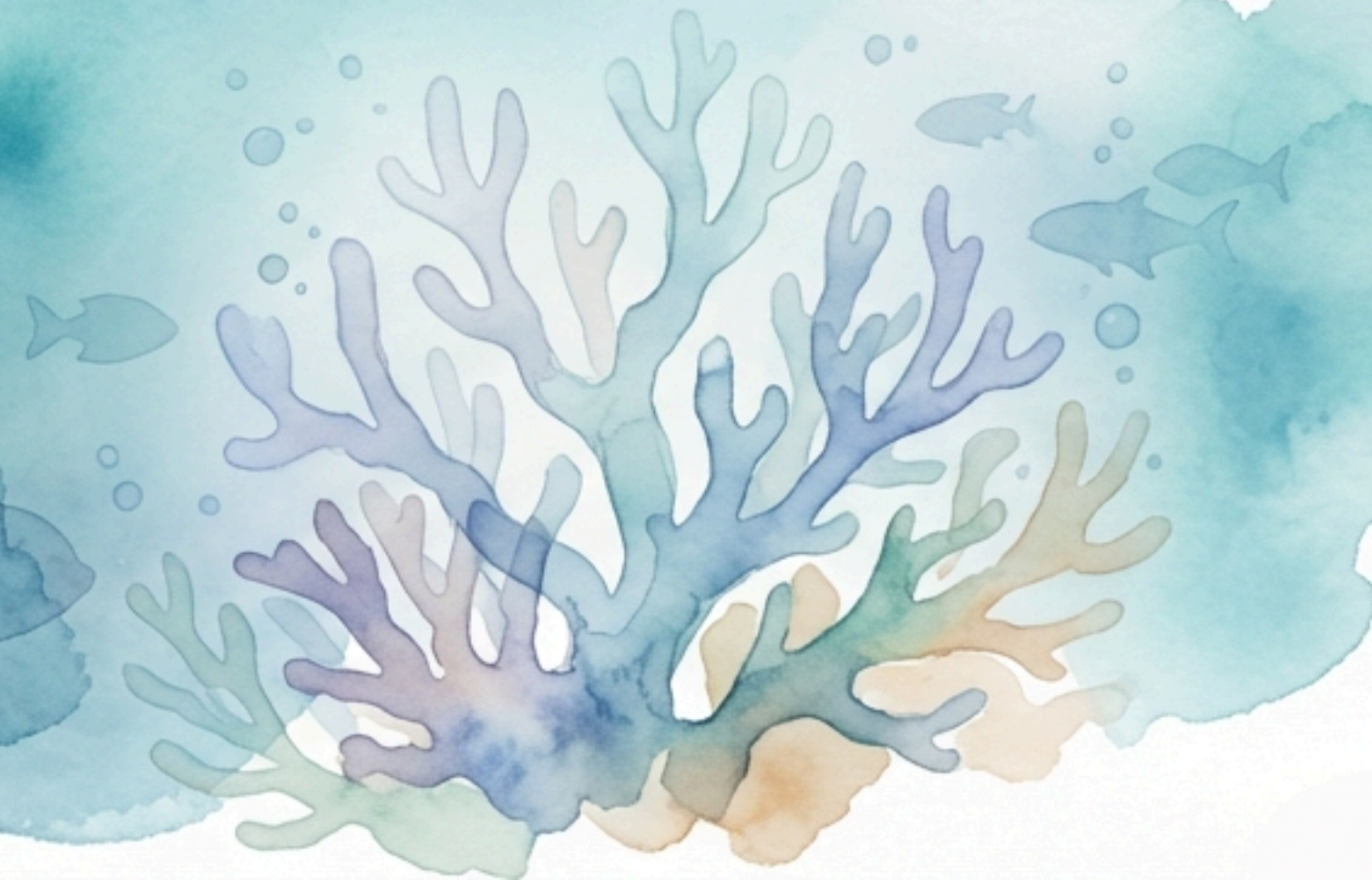


Ocean Restoration and Water Journeys



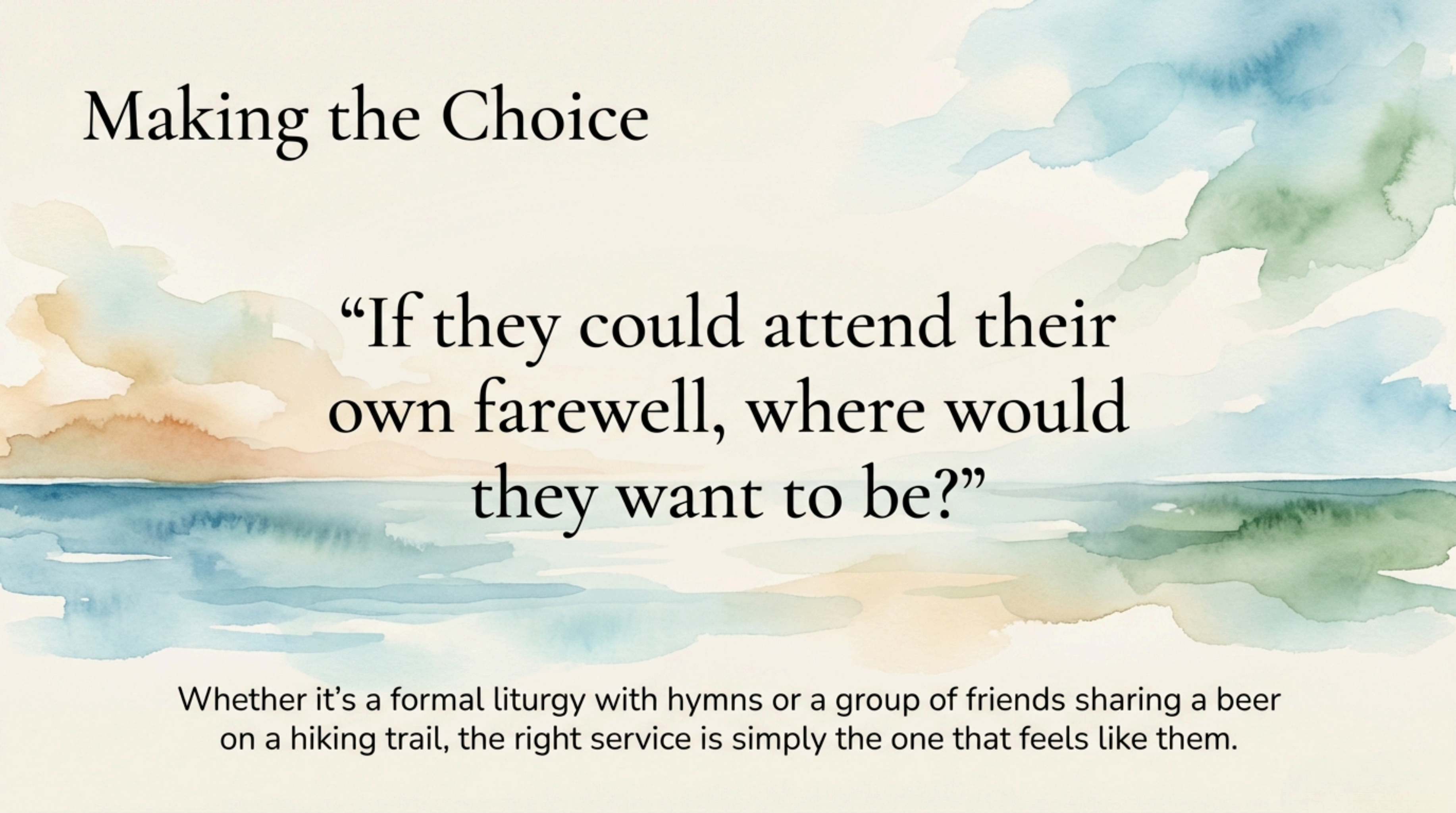
- Water-Soluble Farewells: Graceful urns made from Himalayan rock salt or pressed sand float briefly before sinking and dissolving completely in the current, leaving zero plastic or metal behind.

- Reef Balls: Ashes are mixed into pH-neutral concrete to create marine habitats for coral and sponges. Families receive GPS coordinates to visit by boat.



A Menu of Possibilities


Type of Service	Best For...	Key Element	Environmental Impact
Traditional Memorial	Families seeking structure	Urn as focal point	Moderate
Celebration of Life	Vibrant personalities	High customization	Variable
Tree Urn	Gardeners & Nature lovers	Reforestation	Positive
Reef Ball	Divers & Ocean advocates	Restores coral habitats	Positive
Salt/Paper Urn	Sea/Earth scatterings	100% biodegradable	Neutral



Making the Choice


“If they could attend their own farewell, where would they want to be?”

Whether it's a formal liturgy with hymns or a group of friends sharing a beer on a hiking trail, the right service is simply the one that feels like them.

A watercolor illustration of a sunset over a river. The sun is a large, glowing yellow circle in the center, with rays of light extending outwards. The sky is painted with soft, blended washes of yellow, orange, and peach. Below the horizon, a river flows, its surface reflecting the colors of the sky. The water is painted with various shades of blue, green, and teal, creating a sense of depth and movement. The overall style is soft and artistic, with visible brushstrokes and a gentle, ethereal atmosphere.

The Invitation

Cremation isn't the end of the ceremony;
it's the invitation to create one that truly fits.



Cremation is Only the Beginning

Hoffmann Schneider
& *Kitchen*

FUNERAL HOME • CREMATORY • PREPLANNING

Because We Care

563-582-5222